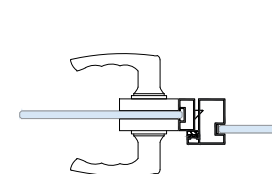
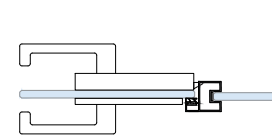
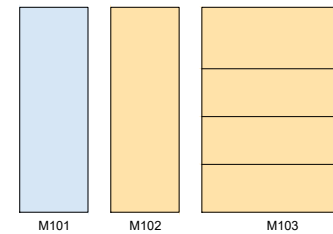
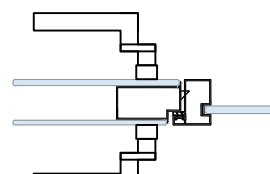
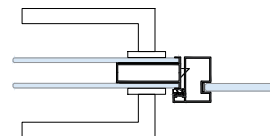
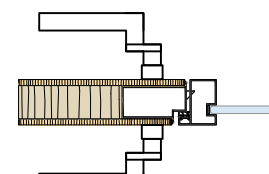
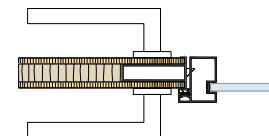
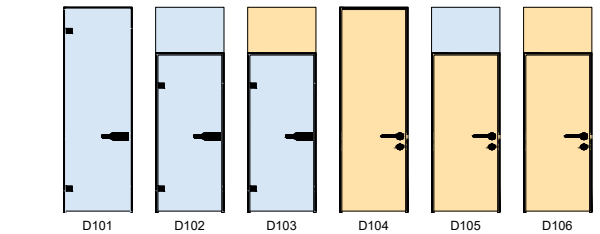


| | |
|---------------------------|--|
| Wall Thickness | 40 mm |
| Aluminum Profiles | E6 / EV1 Anodizing Covering 1.6 mm - 1.8 mm Thickness Or Electrostatic Powder Coated |
| Module Widths | Sized Suitable For Architectural Needs |
| Module Heights | Up to 3500 mm |
| Tolerance | Up to 20mm For Height And Width |
| Weight | 20 - 40 kg/m2 |
| Glass Joint Detail | Transparent PVC Profile With Double Sided Tape |
| Glass Wicks | PVC Wicks Receiving The Vibrations Of The Same Color With Systems In Assembly Profile |
| Glasses | Clear Glasses - Extra Clear Glasses, Bronze - Smoked - Blue Colored Glasses - Opaque Glasses |
| Glass Types | 8 - 10 - 12 mm Tempered Glass 4+4 - 5+5 - 6+6 - 8+8 Laminated, Tempered Laminated, Acoustic Laminated and RAL Code Painted Glasses |
| Sound Insulation | Up To 37,5 dB |
| Sound Insulation Material | A1 Class Rockwool or Mineral Wool Insulation |
| Solid Modules | Panel Edges 1 - 2 mm PVC Tape, E1 Quality 18 mm Thick Wooden Panels - Metal Covered Panels |
| Wooden Module Surfaces | Melamine - HPL Laminate Covering - Natural Wood Covering |
| Door Accessories | System Specific Hinges - Wooden Door Locks - Glass Door Locks Cable Channel Profiles - Door Closers - Card Access Systems - Stoppers |
| Door Leafs | 8 - 10 mm Frameless Tempered Single Glass Door Leafs 42 - 60 mm Melamine - Laminate Covered - Natural Wood Covered - Lacquered Wooden Door Leafs 42 mm Aluminium Framed 2 x 6 mm Tempered Double Glass Door Leafs 42 mm Aluminium Framed 8 - 10 mm Tempered Single Glass Door Leafs Tempered Ral Code Painted Glass Door Leafs |

MODULE TYPES



DOOR MODULES



DOOR MODULES