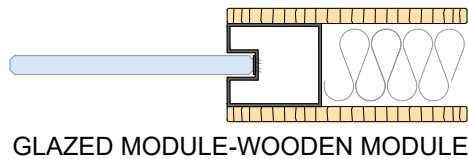
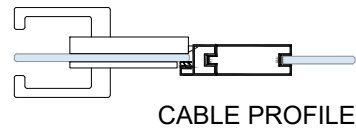
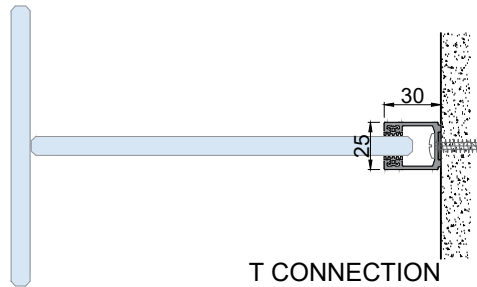
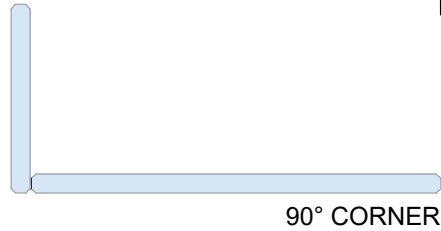
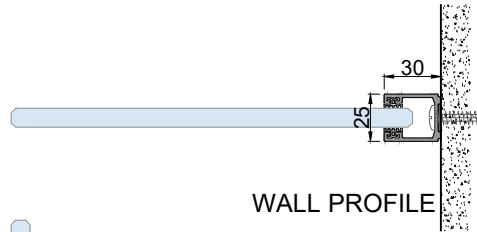
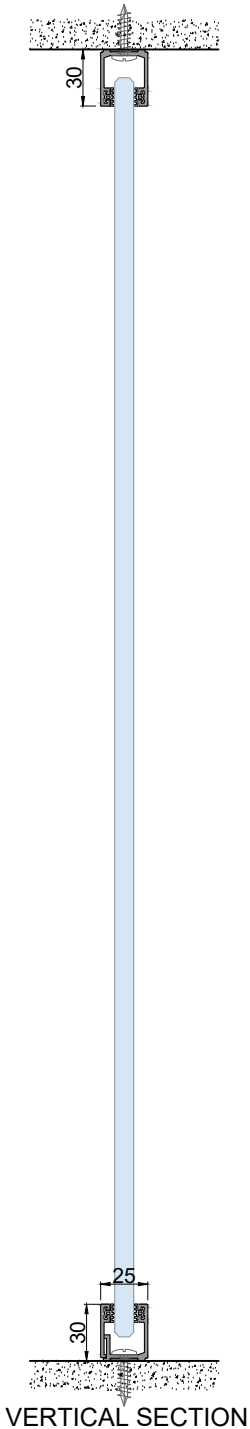
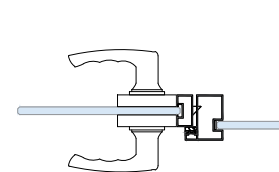
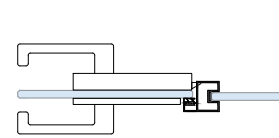
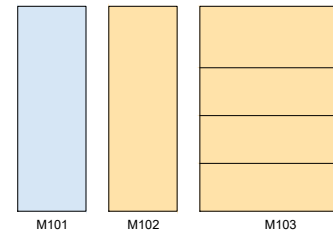


Technical Details

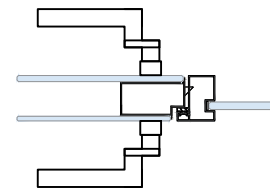
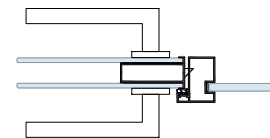
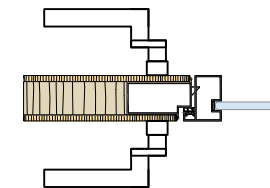
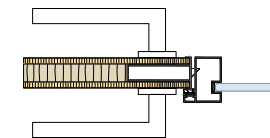
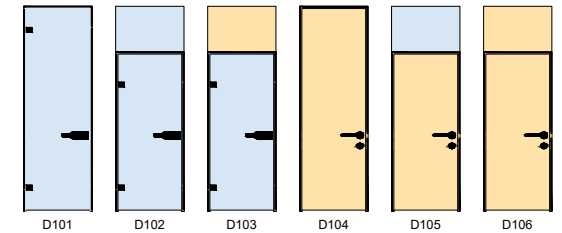


Wall Thickness	25 mm
Aluminum Profiles	E6 / EV1 Anodizing Covering 1.6 mm - 1.8 mm Thickness Or Electrostatic Powder Coated
Module Widths	Sized Suitable For Architectural Needs
Module Heights	Up to 3500 mm
Tolerance	Up to 20mm For Height And Width
Weight	20 - 30 kg/m2
Glass Joint Detail	Transparent PVC Profile With Double Sided Tape
Glass Wicks	PVC Wicks Receiving The Vibrations Of The Same Color With Systems In Assembly Profile
Glasses	Clear Glasses - Extra Clear Glasses, Bronze - Smoked - Blue Colored Glasses - Opaque Glasses
Glass Types	8 - 10 - 12 mm Tempered Glass 4+4 - 5+5 - 6+6 - 8+8 Laminated, Tempered Laminated, Acoustic Laminated and RAL Code Painted Glasses
Sound Insulation	Up To 37,5 dB
Sound Insulation Material	A1 Class Rockwool or Mineral Wool Insulation
Solid Modules	Panel Edges 1 - 2 mm PVC Tape, E1 Quality 18 mm Thick Wooden Panels - Metal Covered Panels
Wooden Module Surfaces	Melamine - HPL Laminate Covering - Natural Wood Covering
Door Accessories	System Specific Hinges - Wooden Door Locks - Glass Door Locks Cable Channel Profiles - Door Closers - Card Access Systems - Stoppers
Door Leafs	8 - 10 mm Frameless Tempered Single Glass Door Leafs 42 - 60 mm Melamine - Laminate Covered - Natural Wood Covered - Lacquered Wooden Door Leafs 42 - 60 mm Aluminium Framed 2 x 6 mm Tempered Double Glass Door Leafs 42 mm Aluminium Framed 8 - 10 mm Tempered Single Glass Door Leafs Tempered Ral Code Painted Glass Door Leafs

MODULE TYPES



DOOR MODULES



DOOR MODULES