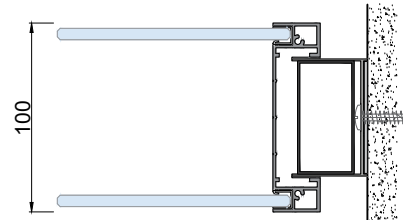
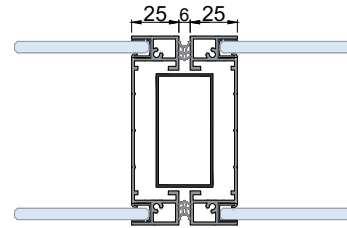


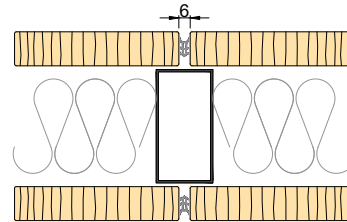
**VERTICAL SECTIONS**



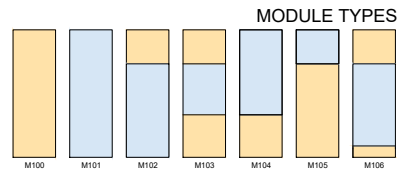
**WALL PROFILE**



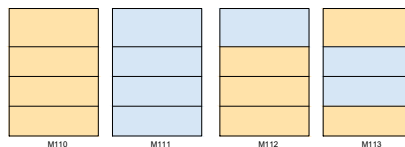
**GLAZED MODULE**



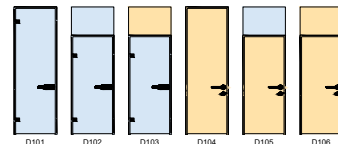
**SOLID MODULE**



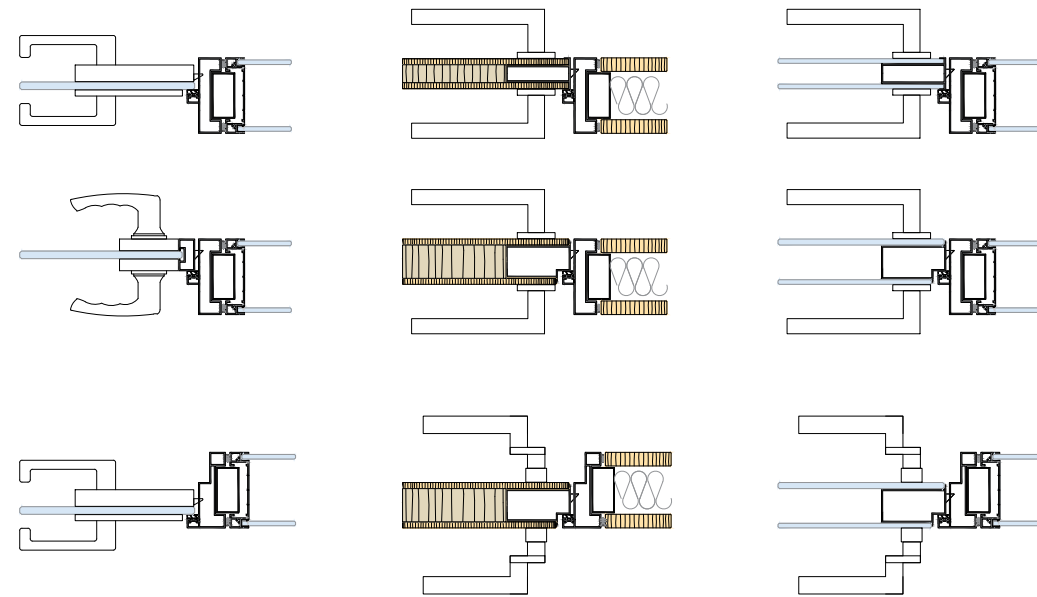
**MODULE TYPES**



**DOOR MODULES**



Wall Thickness	100 mm
Main Profiles	Aluminium or Galvanized Steel Profiles
Aluminum Profiles	E6 / EV1 Anodizing Covering 1.6 mm - 1.8 mm Thickness Or Electrostatic Powder Coated
Module Widths	Sized Suitable For Architectural Needs
Module Heights	Up to 3500 mm
Tolerance	Up to 20mm For Height And Width
Weight	30 - 40 kg/m <sup>2</sup>
Glass Wicks	PVC Wicks Receiving The Vibrations Of The Same Color With Systems In Assembly Profile
Glass Profiles	Visible Profiles
Glasses	Clear Glasses - Extra Clear Glasses, Bronze - Smoked - Blue Colored Glasses - Opaque Glasses
Glass Types	2 x 4 mm or 2 x 6 mm Double Glass or Tempered Double Glass 2 x 3+3 mm Laminated Double Glass
Glazed Modules	Semi or Full Monoblock Modules
Jalousie	Jalousie Between Two Glasses - Manual or Remote Control Motorized 25 - 50 mm
Sound Insulation	Up To 42,5 dB
Sound Insulation Material	A1 Class Rockwool or Mineral Wool Insulation
Joints	6mm Wide Special Rubber - Horizontal And Vertical Joints For Sound Insulation
Solid Modules	Panel Edges 1 - 2 mm PVC Tape, E1 Quality 18 mm Thick Wooden Panels - Metal Covered Panels
Wooden Module Surfaces	Melamine - HPL Laminate Covering - Natural Wood Covering
Door Accessories	System Specific Hinges - Wooden Door Locks - Glass Door Locks Cable Channel Profiles - Door Closers - Card Access Systems - Stoppers
Door Leafs	8 - 10 mm Frameless Tempered Single Glass Door Leafs 42 - 60 - 100 mm Melamine - Laminate Covered - Natural Wood Covered - Lacquered Wooden Door Leafs 42 - 60 - 100 mm Aluminium Framed 2 x 6 mm Tempered Double Glass Door Leafs 42 mm Aluminium Framed 8 - 10 mm Tempered Single Glass Door Leafs Tempered Ral Code Painted Glass Door Leafs



**DOOR MODULES**